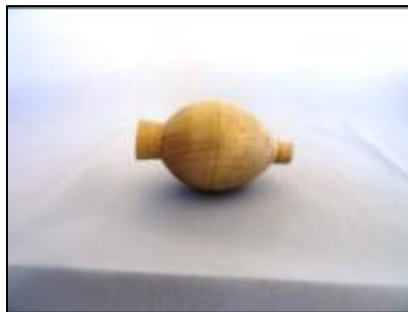


Dave Appleby Woodturning - Chuck & Egg Project

Start with a suitable block of wood 50 mm X 50 mm X 80 mm long



- Turn this between centres down to 45 mm diameter. Be quite careful with this. There is only a small margin for error.
- Mark 10 mm from each end to give you 60 mm for the egg and use a parting tool to give you a small 10-15 mm stub at each end
- Mark 26-27 mm in from one end with a pencil. This is going to be your maximum diameter.
- Shape down to each end as far as the stub. Look at a hens egg or go on the internet to get a suitable template.
- Abrade to good finish.



- Now you need your homemade chuck which is simply made from half a 40 mm straight compression coupling for a waste system



- Cut it in half
- Spin a piece of wood and make a spigot to suit your chuck.
- Hollow out so that the coupling snugly fits in about 15 mm
- Use epoxy or medium superglue to hold.
- Remove rubber washer.
- Take the nut part off and use a gouge in scraping mode to take out any slight imperfections as it spins.



- Put egg in the chuck on your lathe and loosely tighten up nut
- Bring up tailstock and locate in centre mark in stub.
- Tighten egg in chuck. Check that it is turning true.
- Keep tailstock as long as possible while you turn away stub but remove for final pass. Abrade.
- Turn egg around and repeat.



- I use sanding sealer and then a buffing wheel to finish.
- A variety of woods can look good.